

Dubai Creek Harbour

CREEK BEACH

ORCHID



EMAAR

THE WORLD OF TOMORROW

Dubai Creek Harbour is an ultra-modern and stylish neighbourhood situated along the historic Dubai Creek.

Designed with pedestrian-friendly streets, Dubai Creek Harbour offers convenient connections between the neighbourhood centre and a viable mix of retail, business, recreation, parks, open spaces, and community facilities, all within walking distance.



10 Mins from
Burj Khalifa

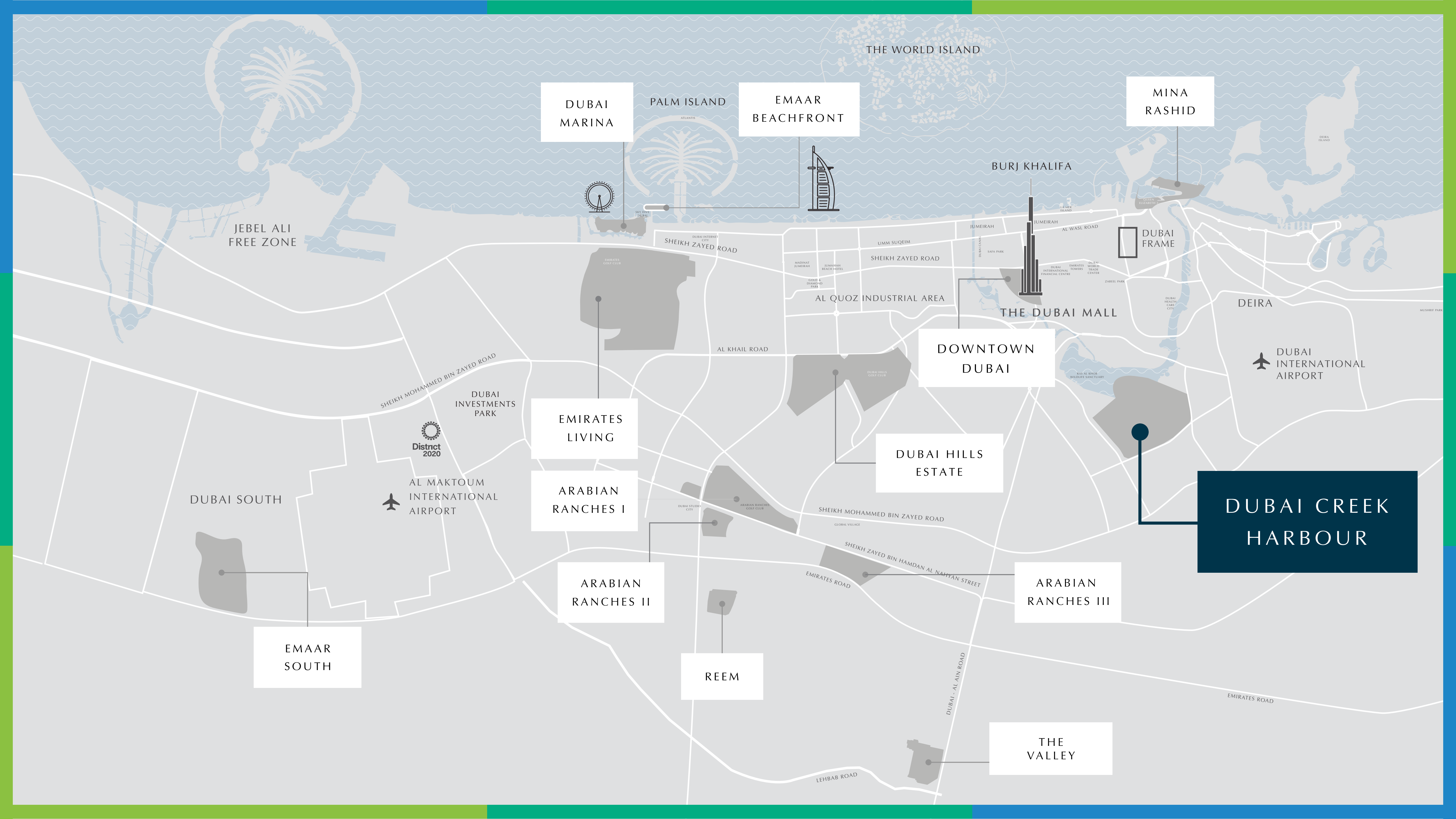


15 Mins from
Dubai Int'l Airport



Wildlife Sanctuary
Home of Pink Flamingos





DUBAI
MARINA

PALM ISLAND

EMAAR
BEACHFRONT

THE WORLD ISLAND

MINA
RASHID

JEBEL ALI
FREE ZONE

BURJ KHALIFA

DUBAI
FRAME

DEIRA

DUBAI
INTERNATIONAL
AIRPORT

DOWNTOWN
DUBAI

THE DUBAI MALL

EMIRATES
LIVING

ARABIAN
RANCHES I

DUBAI HILLS
ESTATE

DUBAI CREEK
HARBOUR

DUBAI SOUTH

AL MAKTOUM
INTERNATIONAL
AIRPORT

ARABIAN
RANCHES II

REEM

ARABIAN
RANCHES III

EMAAR
SOUTH

THE
VALLEY

CREEK BEACH

Creek Beach is Dubai's first-of-its-kind urban beach in the middle of Dubai Creek Harbour. Located along the historic Dubai Creek, Creek Beach is conceived to afford you the ultimate family-friendly retreat. From 700 metres of pristine white sands to the infinity pool and spectacular sunset views, this is paradise reborn.



Breathtaking
Sunset Views



Creek Marina
Yacht Club



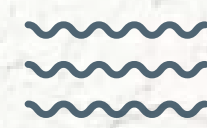
World-Class
Dining & Shopping
Destinations



Socialise At
Creek Promenade



Vibrant
Inner Plaza



Proximity to
a 700-Metre Beach



ORCHID AT CREEK BEACH

Your Idyllic Creekside Life Awaits

Nestled in the heart of a family-focused community, Orchid comprises exquisitely designed apartments.

Situated just footsteps from Creek Beach, Orchid offers residents the very best of relaxed creekside living, along with a vibrant array of shopping, dining and family-friendly leisure experiences on the doorstep.



EXACTLY WHERE YOU'RE MEANT TO BE

Perfectly positioned at the heart of a vibrant, family-focused community, Orchid boasts a wide array of dining, retail, leisure, and recreational amenities on the doorstep.



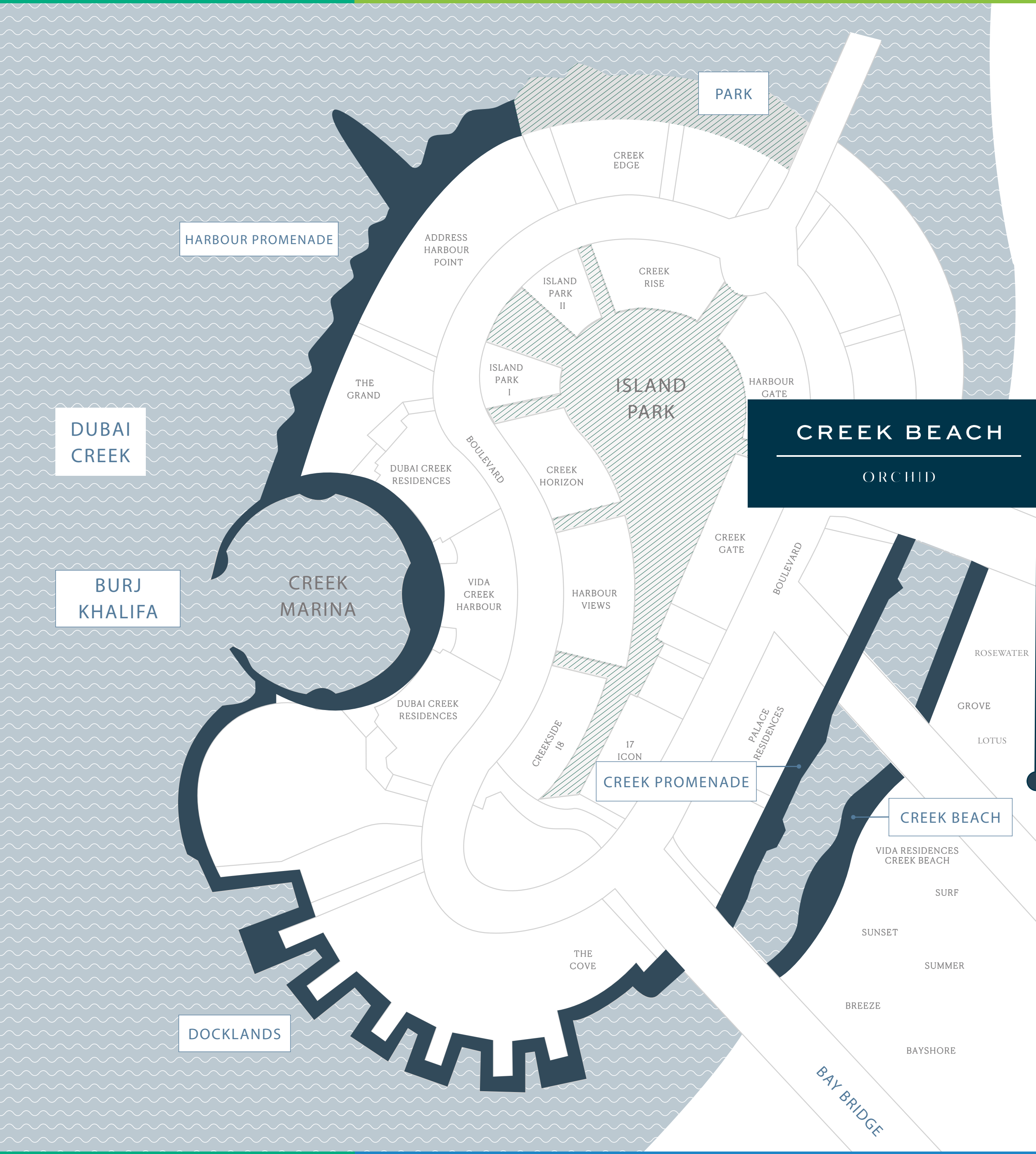
5-min Walk to
Central Park



5 Mins from Creek
Marina Yacht Club



10-min Walk to
Creek Marina





Orchid at Creek Beach

LIVE LIFE TO THE FULL

Orchid's inspired array of apartments perfectly blend luxury, comfort and tranquillity.

Each beautifully designed home is an urban residential haven where families can enjoy a truly fulfilling lifestyle amidst a thriving community.

Orchid at Creek Beach

FEEL TRULY AT HOME

Positioned at the centre of a vibrant recreational hub.

Orchid is where you and your family can feel truly at home
– immersed in a lifestyle of convenience and contentment,
with everything you need just moments away.







Interiors

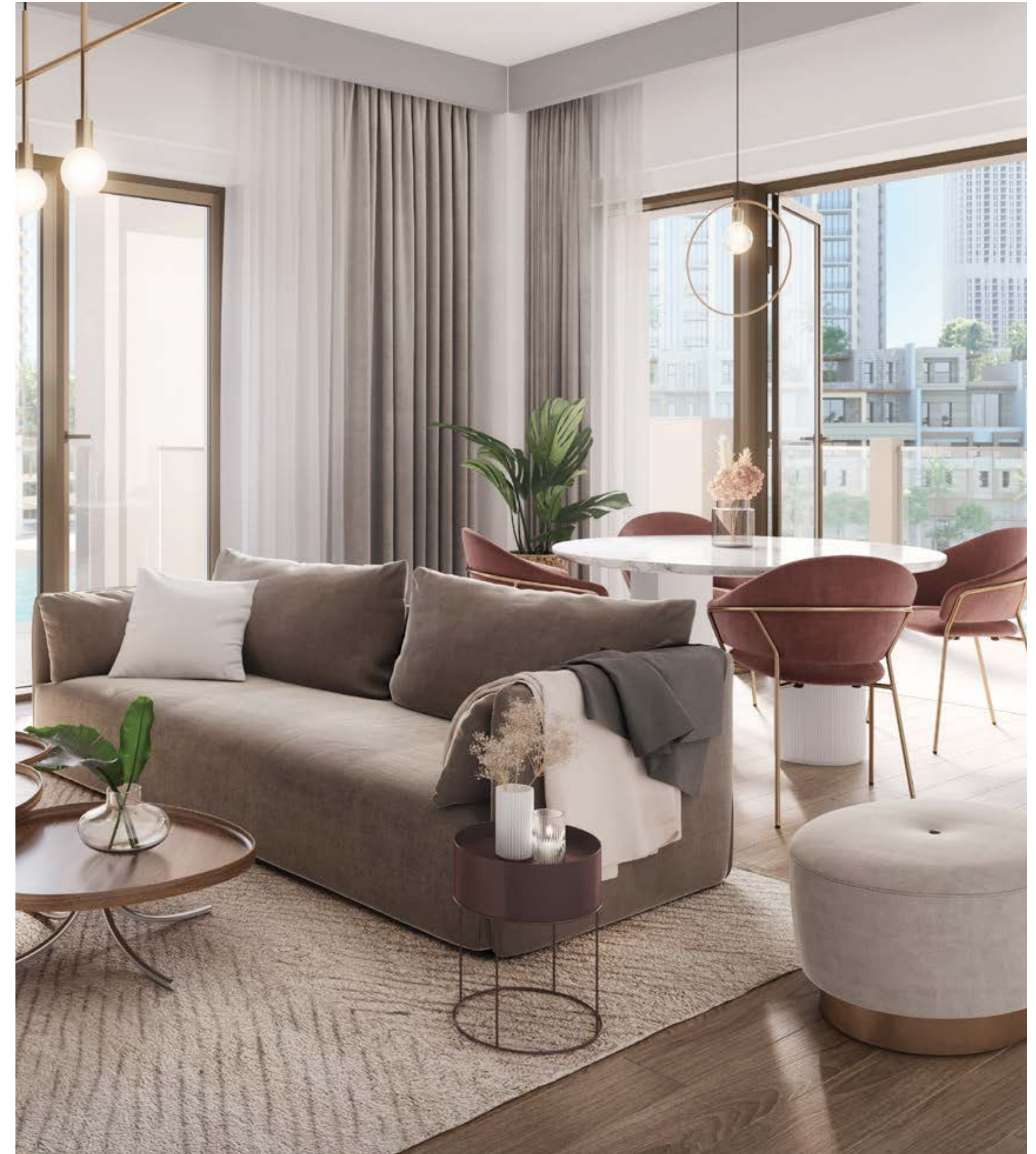
DESIGNED FOR YOUR LIFESTYLE

Orchid's exquisite living spaces combine sophisticated yet simplistic design aesthetics with tasteful architectural touches, ensuring each residence strikes the perfect balance between elegance, comfort and practicality.

Interiors

STYLISH LIVING SPACES FOR MODERN LIFESTYLES

Modern and refined 1, 2 & 3-bedroom apartments





STRIKE THE RIGHT BALANCE, EVERY DAY

With family-friendly amenities, outstanding dining experiences, and shopping destinations on the doorstep, Orchid offers residents everything they need for a perfectly balanced lifestyle.



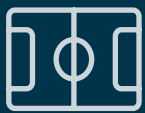
Outdoor
Play Area



Barbecue
Facilities



Fully Equipped
Gym



Multi-Purpose
Room



Town
Centre



Community Pool
& Kids Pool*

CREEK PROMENADE

Relax, unwind and enjoy quality time with family and friends as you dine and socialise at Dubai's newest hotspot.



Vibrant Waterfront
Destination



Licensed Bars &
Restaurants



Gourmet Dining
Options





CREEK MARINA

Find the perfect balance between urban life and waterfront tranquility at Creek Marina.



Creek Marina
Yacht Club



Interactive Art
Installations



Near Central
Park



Gourmet Dining
Options



Waterfront
Promenade



Wi-Fi
Hotspots

CENTRAL PARK

Central Park is the focal point of future-ready island living. Surrounded by Creek Island’s breath-taking, contemporary, residential buildings – Central Park offers residents a tranquil retreat for relaxation, world-class amenities for enjoyment, and wide-open spaces for boundless recreation.



Verdant Open Spaces



Interactive Water Feature



Amphitheatre



Picturesque Desert Garden



Kids' Playground



Fitness Plaza & Skate Park



GLOBAL LIFESTYLE DEVELOPER

An undisputed leader in the global real estate market, Emaar has grown over the years to become the largest real estate developer outside of mainland China. You will be investing with one of the most respected brands in the world.

NET PROFIT	REVENUE	MARKET CAP
AED	AED	AED
3.8BN	28.27BN	40BN
AS OF 31 DECEMBER 2021		

RESIDENTIAL UNITS DELIVERED	RESIDENTIAL UNITS UNDER DEVELOPMENT
81,600+	35,200+



ORCHID CREEK BEACH

FOR MORE INFORMATION PLEASE CONTACT



STAY AHEAD, INVEST SMART

📞 +971 55 476 7630

☎ +971 4 368 7878

✉ info@afsrealestate.com

🌐 www.afsrealestate.com



DUBRICKS

POSSIBILITIES ARE LIMITLESS

📞 +971 50 674 2020

☎ +971 4 368 7878

✉ info@dubricks.com

🌐 www.dubricks.com

EMAAR